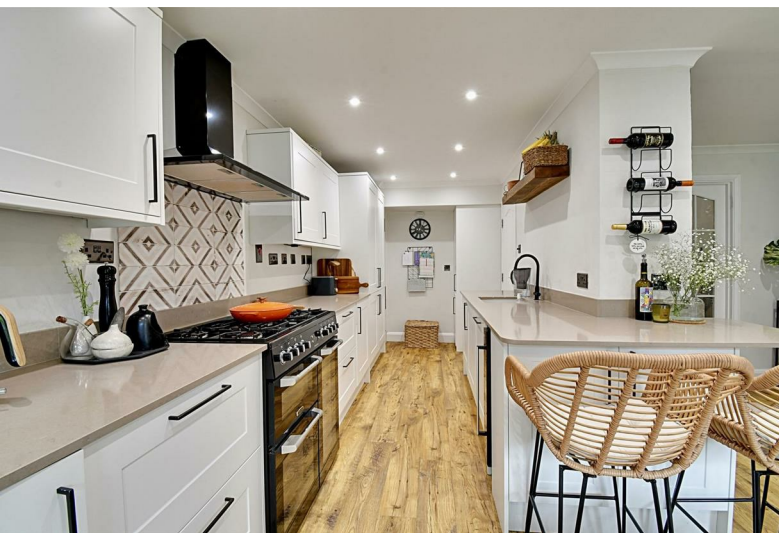




69 Cherry Tree Green

Hertford, SG14 2HS

Price Guide £470,000



69 Cherry Tree Green

Hertford, SG14 2HS

Price Guide £470,000



Front door into:

Entrance Hall:

Built in storage cupboard and doors to:

Shower Room:

Pedestal wash hand basin with twin taps, low level dual flush WC, fully tiled walls, tiled floor, appliance space for washing machine and dryer.

Living Room:

20'9 x 16'11 (6.32m x 5.16m)

Double glazed window to front aspect, stairs to first floor, under stairs storage cupboard, French doors to dining room, door to kitchen.

Kitchen/Dining Room:

22'09 x 15'07 (6.93m x 4.75m)

Comprising of:

Kitchen:

Fitted with a range of contemporary base and wall mounted units with contrasting worksurface incorporating one and half bowl sink with mixer tap and drainer, built in fridge, freezer and dishwasher, appliance space for range cooker and wine cooler, extractor hood, UPVC double glazed doors opening to rear garden.

Dining Room:

Double glazed doors leading to rear garden, doors to lounge and coved ceiling

First Floor Landing:

Loft access and doors to:

Bedroom One:

13'10 x 10'02 (4.22m x 3.10m)

Double glazed window to rear aspect.

Bedroom Two:

12'11 x 9'05 (3.94m x 2.87m)

Double glazed window to front aspect.

Bedroom Three:

9'10 x 7'01 (3.00m x 2.16m)

Double glazed window to front aspect.

Bathroom:

8'0 x 6'04 (2.44m x 1.93m)

Three piece suite comprising of bath with mixer tap and wall mounted shower unit, pedestal wash hand basin with mixer tap, low level WC, heated towel rail, fully tiled walls, airing cupboard housing hot water cylinder with shelving, fully tiled walls, tiled floor.

Garden:

South facing rear garden, mainly laid to lawn with decked area, paved patio area, timber built shed, outside water tap and socket, pedestrian gated side access.

Garage:

16'9 x 8'1 (5.11m x 2.46m)

With up and over door, power and light.



Floor Plan

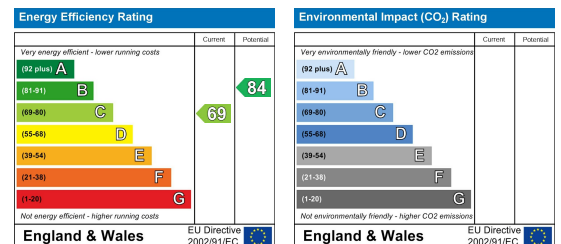


Illustration for identification purposes only, measurements are approximate, not to scale.

Viewing

Please contact Shepherds of Hertford on 01992 551955
if you wish to arrange a viewing appointment for this property or require
further information.

Energy Performance Graph



These particulars, whilst believed to be accurate are set out as a general outline only for guidance and do not constitute any part of an offer or contract. Intending purchasers should not rely on them as statements of representation of fact, but must satisfy themselves by inspection or otherwise as to their accuracy. No person in this firm's employment has the authority to make or give any representation or warranty in respect of the property.